

Introduction

Purpose

This manual provides instructions for installing Speaker Retrofit Kit (M18418K001) in Encore® 900 units.

Intended Users

This manual is intended for Gilbarco®-trained and certified Authorized Service Contractors (ASCs).

Table of Contents

Topic	Page
Introduction	1
Important Safety Information	3
Before You Begin	5
Speaker Installation	6

Required Tools

The following tools are required for installation of the Speaker Retrofit Kit:

- 1/4-inch socket
- Torque Wrench
- Drive Ratchet

Parts List

The following table lists the parts included for M18418K001Kit :

Item #	Description	Part Number	Quantity
1	Speaker, Exciter E-CIM (4-Legged)	M11783B001	1
2	Speaker Bracket, 4 Leg	M18358B001	2
3	Screw, Hex Head 6-20	Q11677-26	2

Related Documents

Document Number	Title	GOLD SM Library
MDE-3985	Encore Installation Manual	Encore
MDE-5029	Encore 300/500/700 S Intercom Call Interface Board Installation Instructions	Encore
MDE-5356	Encore 900 Start-Up and Service Manual	<ul style="list-style-type: none">• Encore• Service Manual

Abbreviations and Acronyms

Term	Description
ASC	Authorized Service Contractor
DEF	Diesel Exhaust Fluid
ESD	Electrostatic Discharge
FCC	Federal Communications Commission
GOLD	Gilbarco Online Documentation
NEC®	National Electrical Code
NFPA	National Fire Protection Association
OSHA	Occupational Safety and Health Administration
PIP	Peripheral Interface PCB
STP	Submersible Turbine Pump
TAC	Technical Assistance Center

Important Safety Information

Notes: 1) *Save this Important Safety Information section in a readily accessible location.*

2) *Although DEF is non-flammable, Diesel is flammable. Therefore, for DEF cabinets that are attached to Diesel dispensers, follow all the notes in this section that pertain to flammable fuels.*

This section introduces the hazards and safety precautions associated with installing, inspecting, maintaining, or servicing this product. Before performing any task on this product, read this safety information and the applicable sections in this manual, where additional hazards and safety precautions for your task will be found. Fire, explosion, electrical shock, or pressure release could occur and cause death or serious injury, if these safe service procedures are not followed.



Preliminary Precautions

You are working in a potentially dangerous environment of flammable fuels, vapors, and high voltage or pressures. Only trained or authorized individuals knowledgeable in the related procedures should install, inspect, maintain, or service this equipment.

Emergency Total Electrical Shut-Off

The first and most important information you must know is how to stop all fuel flow to the pump/dispenser and island. Locate the switch or circuit breakers that shut off all power to all fueling equipment, dispensing devices, and Submerged Turbine Pumps (STPs).

⚠ WARNING

The EMERGENCY STOP, ALL STOP, and PUMP STOP buttons at the cashier's station WILL NOT shut off electrical power to the pump/dispenser. This means that even if you activate these stops, fuel may continue to flow uncontrolled. You must use the TOTAL ELECTRICAL SHUT-OFF in the case of an emergency and not the console's ALL STOP and PUMP STOP or similar keys.

Total Electrical Shut-Off Before Access

Any procedure that requires access to electrical components or the electronics of the dispenser requires total electrical shut off of that unit. Understand the function and location of this switch or circuit breaker before inspecting, installing, maintaining, or servicing Gilbarco equipment.

Evacuating, Barricading, and Shutting Off

Any procedure that requires access to the pump/dispenser or STPs requires the following actions:



- An evacuation of all unauthorized persons and vehicles from the work area
- Use of safety tape, cones, or barricades at the affected unit(s)
- A total electrical shut-off of the affected unit(s)

Read the Manual

Read, understand, and follow this manual and any other labels or related materials supplied with this equipment. If you do not understand a procedure, call the Gilbarco Technical Assistance Center (TAC) at 1-800-743-7501. It is imperative to your safety and the safety of others to understand the procedures before beginning work.

Follow the Regulations

Applicable information is available in National Fire Protection Association (NFPA) 30A; *Code for Motor Fuel Dispensing Facilities and Repair Garages*, NFPA 70; *National Electrical Code (NEC)*, Occupational Safety and Health Administration (OSHA) regulations and federal, state, and local codes. All these regulations must be followed. Failure to install, inspect, maintain, or service this equipment in accordance with these codes, regulations, and standards may lead to legal citations with penalties or affect the safe use and operation of the equipment.

Replacement Parts

Use only genuine Gilbarco replacement parts and retrofit kits on your pump/dispenser. Using parts other than genuine Gilbarco replacement parts could create a safety hazard and violate local regulations.

Federal Communications Commission (FCC) Warning

This equipment has been tested and found to comply with the limits for a Class A digital device pursuant to Part 15 of the FCC Rules. These limits are designed to provide reasonable protection against harmful interference when the equipment is operated in a commercial environment. This equipment generates, uses, and can radiate radio frequency energy, and if not installed and used in accordance with the instruction manual, may cause harmful interference to radio communications. Operation of this equipment in a residential area is likely to cause harmful interference in which case the user will be required to correct the interference at his own expense. Changes or modifications not expressly approved by the manufacturer could void the user's authority to operate this equipment.

Safety Symbols and Warning Words

This section provides important information about warning symbols and boxes.

Alert Symbol



This safety alert symbol is used in this manual and on warning labels to alert you to a precaution which must be followed to prevent potential personal safety hazards. Obey safety directives that follow this symbol to avoid possible injury or death.

Signal Words

These signal words used in this manual and on warning labels tell you the seriousness of particular safety hazards. The precautions below must be followed to prevent death, injury, or damage to the equipment:



DANGER: Alerts you to a hazard or unsafe practice which will result in death or serious injury.



WARNING: Alerts you to a hazard or unsafe practice that could result in death or serious injury.



CAUTION with Alert symbol: Designates a hazard or unsafe practice which may result in minor injury.

CAUTION without Alert symbol: Designates a hazard or unsafe practice which may result in property or equipment damage.

Working With Fuels and Electrical Energy Prevent Explosions and Fires

Fuels and their vapors will explode or burn, if ignited. Spilled or leaking fuels cause vapors. Even filling customer tanks will cause potentially dangerous vapors in the vicinity of the dispenser or island.

DEF is non-flammable. Therefore, explosion and fire safety warnings do not apply to DEF lines.

Important Safety Information

No Open Fire



Open flames from matches, lighters, welding torches or other sources can ignite fuels and their vapors.

No Sparks - No Smoking



Sparks from starting vehicles, starting or using power tools, burning cigarettes, cigars or pipes can also ignite fuels and their vapors. Static electricity, including an electrostatic charge on your body, can cause a spark sufficient to ignite fuel vapors. Every time you get out of a vehicle, touch the metal of your vehicle, to discharge any electrostatic charge before you approach the dispenser island.

Working Alone

It is highly recommended that someone who is capable of rendering first aid be present during servicing. Familiarize yourself with Cardiopulmonary Resuscitation (CPR) methods, if you work with or around high voltages. This information is available from the American Red Cross. Always advise the station personnel about where you will be working, and caution them not to activate power while you are working on the equipment. Use the OSHA Lockout/Tagout procedures. If you are not familiar with this requirement, refer to this information in the service manual and OSHA documentation.

Working With Electricity Safely

Ensure that you use safe and established practices in working with electrical devices. Poorly wired devices may cause a fire, explosion or electrical shock. Ensure that grounding connections are properly made. Take care that sealing devices and compounds are in place. Ensure that you do not pinch wires when replacing covers. Follow OSHA Lockout/Tagout requirements. Station employees and service contractors need to understand and comply with this program completely to ensure safety while the equipment is down.

Hazardous Materials

Some materials present inside electronic enclosures may present a health hazard if not handled correctly. Ensure that you clean hands after handling equipment. Do not place any equipment in the mouth

WARNING

In the event of inclement weather, including snow, ice, or flooding that makes driving conditions dangerous, please avoid servicing units. Always use available door stops to secure upper doors against unwanted/unexpected movement, especially during high winds. If necessary, reschedule service to avoid damage to the equipment. Weather may change unexpectedly; be aware of local weather conditions. During service, if conditions develop making service unsafe, close the unit(s) and proceed to a safe location.

WARNING

The pump/dispenser contains a chemical known to the State of California to cause cancer.

WARNING

The pump/dispenser contains a chemical known to the State of California to cause birth defects or other reproductive harm.



Gilbarco Veeder-Root encourages the recycling of our products. Some products contain electronics, batteries, or other materials that may require special management practices depending on your location. Please refer to your local, state, or country regulations for these requirements.

In an Emergency

Inform Emergency Personnel

Compile the following information and inform emergency personnel:

- Location of accident (for example, address, front/back of building, and so on)
- Nature of accident (for example, possible heart attack, run over by car, burns, and so on)
- Age of victim (for example, baby, teenager, middle-age, elderly)
- Whether or not victim has received first aid (for example, stopped bleeding by pressure, and so on)
- Whether or not a victim has vomited (for example, if swallowed or inhaled something, and so on)

WARNING



Gasoline/DEF ingested may cause unconsciousness and burns to internal organs. Do not induce vomiting. Keep airway open. Oxygen may be needed at scene. Seek medical advice immediately.

WARNING

DEF generates ammonia gas at higher temperatures. When opening enclosed panels, allow the unit to air out to avoid breathing vapors. If respiratory difficulties develop, move victim away from source of exposure and into fresh air. If symptoms persist, seek medical attention.

WARNING



Gasoline inhaled may cause unconsciousness and burns to lips, mouth and lungs. Keep airway open. Seek medical advice immediately.

WARNING



Gasoline/DEF spilled in eyes may cause burns to eye tissue. Irrigate eyes with water for approximately 15 minutes. Seek medical advice immediately.

WARNING



Gasoline/DEF spilled on skin may cause burns. Wash area thoroughly with clear water. Seek medical advice immediately.

WARNING

DEF is mildly corrosive. Avoid contact with eyes, skin, and clothing. Ensure that eyewash stations and safety showers are close to the work location. Seek medical advice/recommended treatment if DEF spills into eyes.

IMPORTANT: Oxygen may be needed at scene if gasoline has been ingested or inhaled. Seek medical advice immediately.

Lockout/Tagout

Lockout/Tagout covers servicing and maintenance of machines and equipment in which the unexpected energization or start-up of the machine(s) or equipment or release of stored energy could cause injury to employees or personnel. Lockout/Tagout applies to all mechanical, hydraulic, chemical, or other energy, but does not cover electrical hazards. Subpart S of 29 CFR Part 1910 - Electrical Hazards, 29 CFR Part 1910.333 contains specific Lockout/Tagout provision for electrical hazards.

Before You Begin

Read and follow all safety information provided in “[Important Safety Information](#)” on [page 3](#) and *MDE-5356 Encore 900 Start-up and Service Manual*.

CAUTION



A properly grounded Electrostatic Discharge (ESD) wrist strap must be worn while servicing any electronic devices or components. Failure to use electrostatic precautions may damage electronic components and void warranty.

- 1 Inform the manager.
- 2 Barricade the unit to be worked on.
- 3 Remove power to the unit at the breaker panel. Follow OSHA lockout/tagout procedures.

WARNING

Failure to turn off the unit during the kit installation may cause injury or bodily harm from electrical shock. Ensure that all power to the unit is switched off before and during kit installation.

CAUTION



In the event of inclement weather, including snow, ice, or flooding that makes driving conditions dangerous, please avoid servicing units. Always use available door stops to secure upper doors against unwanted/unexpected movement, especially during high winds. If necessary, reschedule service to avoid damage to the equipment. Weather may change unexpectedly, be aware of local weather conditions. During service, if conditions develop making service unsafe, close the unit(s) and proceed to a safe location..

- 4 Match the parts received in the kit with “[Parts List](#)” on [page 1](#).

Speaker Installation

Preparing for installation

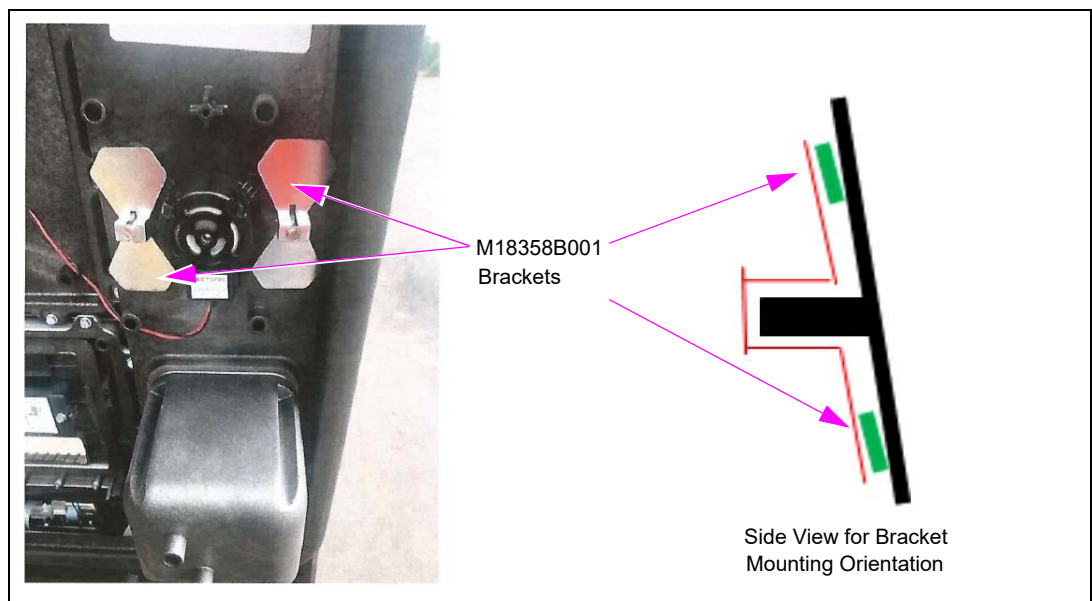
- 1 Before proceeding, read and follow all the safety instructions and procedures.
- 2 Open the lower panel and main door.

Installation Instructions for M11783B001

To install the speaker for Applause Media System, proceed as follows:

- 1 If a 3-legged speaker is already in use, unplug the speaker and unscrew its supporting brackets, retaining the screws. Remove the 3-legged speaker from the door, and clean any residue.
- 2 Before placing the speaker, remove the adhesive protective paper for the speaker pads and adhere to bezel in this location. Place the speaker assembly between mounting bosses on the right bezel. Speaker mounting location is shown in [Figure 4](#) on [page 8](#).
- 3 Orient the bracket so that the protruding edge is at the bottom. The top and bottom “wings” of the bracket are not identical. Do a test to ensure that the bracket makes appropriate contact against the speaker. If not, bend the bracket until it is pressed against the speaker legs with a small amount of tension in the spring.
- 4 Place the brackets (M18358B001) over the speaker with the gasket facing the speaker. The orientation of the brackets should follow as shown in [Figure 1](#). Insert Q11677-26 screws through brackets and into mounting bosses on the bezel. Torque to 16 in-lb.

Figure 1: Speaker Bracket Mounting Orientation



- 5 For units equipped with a 10.4-inch display, plug the speaker connector into the speaker connection on Peripheral Interface PCB (PIP) board as shown in [Figure 2](#).

Figure 2: PIP Board Connection for 10.4-inch Display



- 6 For units equipped with a 15.6-inch display, plug the speaker connector into the speaker connection on PIP board as shown in [Figure 3](#).

Figure 3: PIP Board Connection for 15.6-inch Touch Display

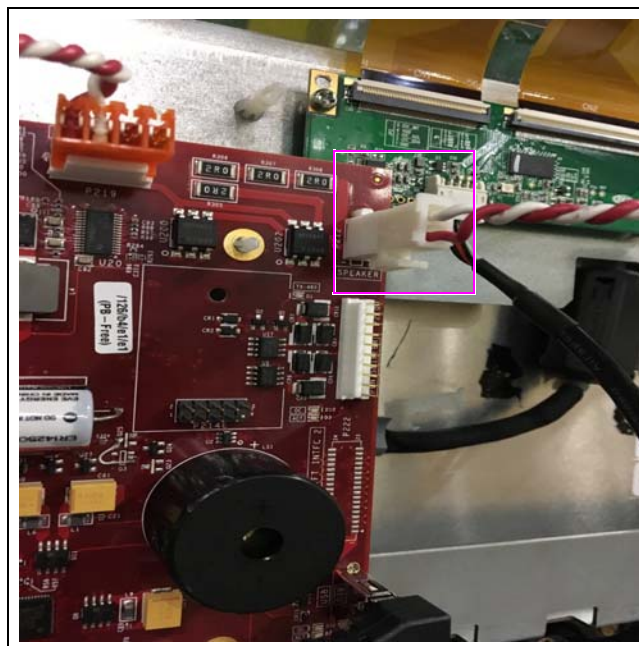
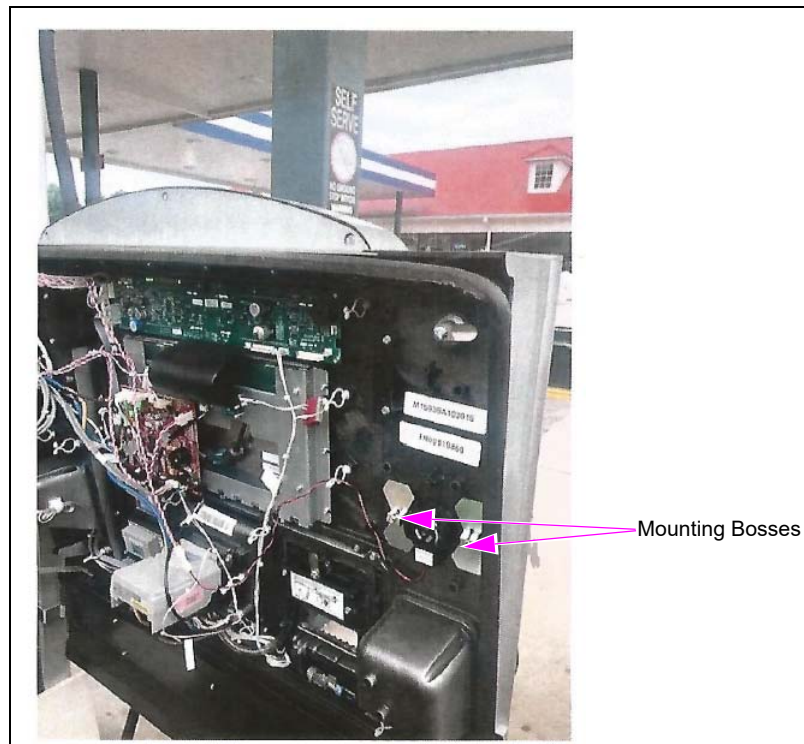


Figure 4: Speaker Connected to PIP Board for 15.6-inch Touch Display



Completing the Installation

To complete the installation, proceed as follows:

- 1 Close and secure the lower panel and main door.
- 2 To restore power to the unit, refer to *MDE-5356 Encore 900 Start-Up and Service Manual* for access instructions.

This page is intentionally left blank.

Applause™ Media System is a trademark of Gilbarco Inc. Encore® and Gilbarco® are registered trademarks of Gilbarco Inc. GOLDSM is a service mark of Gilbarco Inc.

All product names, logos, and brands are the property of their respective owners and are for identification purposes only. Use of these names, logos, and brands does not imply endorsement.



© 2021 Gilbarco Inc.
7300 West Friendly Avenue · Post Office Box 22087
Greensboro, North Carolina 27420
Phone (336) 547-5000 · <http://www.gilbarco.com> · Printed in the U.S.A.
MDE-5576A Speaker Kit (M18418K001) Installation Instructions · October 2021